



GAT MONTHLY MEMBERSHIP PROGRESS REPORT

Results as of: 7/31/2021

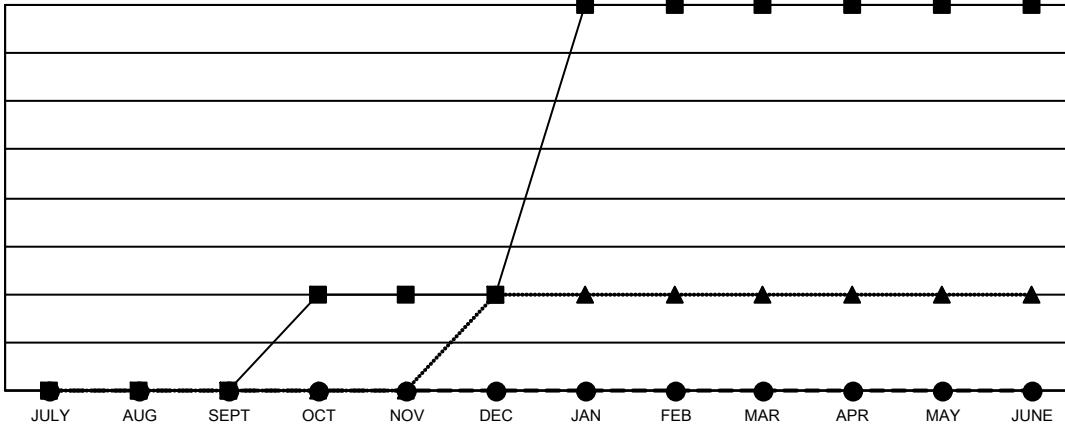
Multiple District 29

LOCATION: WEST VIRGINIA

Clubs			
RESULTS FOR 2021-2022			
QUARTER	NEW CLUB GOAL	NEW CLUBS	DROPPED CLUBS
JULY/AUG/SEPT	0	0	0
OCT/NOV/DEC	1	0	0
JAN/FEB/MAR	3	0	0
APR/MAY/JUNE	0	0	0

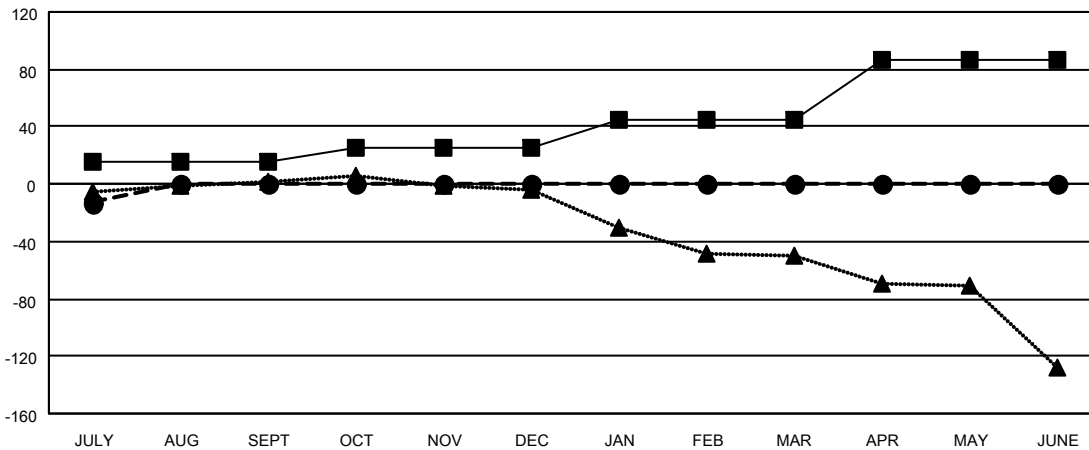
Members			
RESULTS FOR 2021-2022			
QUARTER	MEMBER GROWTH NET GOAL	MEMBER GROWTH ACTUAL	DROPPED MEMBERS ACTUAL (including transfers)
JULY/AUG/SEPT	15	19	31
OCT/NOV/DEC	10	0	0
JAN/FEB/MAR	20	0	0
APR/MAY/JUNE	41	0	0

GOALS AND ACTUAL NEW CLUBS CUMULATIVE



- - CURRENT YEAR GOALS FOR NEW CLUBS
- - CURRENT YEAR ACTUAL NEW CLUBS
- ▲ - LAST YEAR ACTUAL NEW CLUBS

GOALS AND ACTUAL MEMBERS CUMULATIVE



- - MEMBER GROWTH NET GOAL
- - MEMBER GROWTH ACTUAL
- ▲ - LAST YEAR MEMBERSHIP ACTUAL

DROPPED CLUBS: 0	
<u>DROPPED MEMBERS</u>	
DECEASED	6
CLUB CANCELLED	0
OTHER	25
TOTAL	31

12 CLUBS OF 165 ADDED 1 OR MORE NEW MEMBERS

[CLICK HERE FOR CUMULATIVE MEMBERSHIP DATA](#)

<u>GENDER DISTRIBUTION</u>	
MALE	2,365 (63.80%)
FEMALE	1,342 (36.20%)
TOTAL FAMILY UNIT MEMBERS	1,103
FAMILY MEMBERS PAYING HALF DUES	565